

Installation and Configuration Guide

BlackBerry Email Compression for Enterprise

Version 1.0



Contents

What is BlackBerry Email Compression for Enterprise?.....	4
System requirements.....	4
Installing and configuring BlackBerry Email Compression for Enterprise in a BES10 environment.....	5
Add the compression libraries to Microsoft IIS.....	5
Edit the BlackBerry Compression for Work Email IT policy rule.....	6
Installing and Configuring BlackBerry Email Compression for Enterprise in a BES12 environment.....	7
Add the compression libraries to Microsoft IIS.....	7
Edit the “Use BlackBerry compression for work email” IT policy rule	8
Confirm that your server is using BlackBerry Email Compression for Enterprise.....	9
Logging and reporting.....	10
Configure statistics logging.....	10
Legal notice.....	11

What is BlackBerry Email Compression for Enterprise?

BlackBerry Email Compression for Enterprise is a data compression tool for customers who are concerned about data costs. Data cost reduction varies depending on regional data costs, organizations' data plans, and administration of networks.

BlackBerry Email Compression for Enterprise provides the following:

- Compression of all inbound email for all compressible text email content (for example, body text, HTML, news articles)
- IT policy rules to control user access to compression features
- Compression up to 50% better than industry-standard Gzip
- Compatibility with S/MIME email bodies
- Basic logging to measure compression savings

System requirements

Item	Requirement
Mobile OS	<ul style="list-style-type: none"> • BlackBerry 10 OS version 10.3.1 or later • Android 5.1 (PRIV) or later
EMM solution	<ul style="list-style-type: none"> • BES10 version 10.2.4 or later • BES12 version 12.0 or later
Web server	Microsoft IIS 7.5+ with Microsoft Visual C++ 2010 Redistributable -x64 Package

Installing and configuring BlackBerry Email Compression for Enterprise in a BES10 environment

To install and configure BlackBerry Email Compression for Enterprise in a BES10 environment, you must perform the following tasks:

- Add the compression libraries to the Microsoft IIS instance that your mail server uses.
- Edit the "BlackBerry Compression for Work Email" IT policy rule.

Add the compression libraries to Microsoft IIS

These instructions apply to Microsoft IIS 7.5. If you are using a different version of Microsoft IIS, some steps might be different. For more information, see the documentation for the Microsoft IIS version that you are using for more details.

Warning: This task requires you to make changes to the web server configuration on the Microsoft Exchange Server. Any configuration errors might interrupt connectivity for Microsoft Outlook Web Access and Exchange ActiveSync. It is recommended that you verify connectivity after you complete this task.

Before you begin: Verify that Microsoft IIS has the Static Content Compression and the Dynamic Content Compression role services installed.

1. On the computer that hosts Microsoft IIS, verify that the Microsoft Visual C++ 2010 Redistributable -x64 Package (or equivalent DLLs) is installed.
2. Visit the [BlackBerry Compression for Work Email \(Server plug-in\)](#) page and download the **Install_BBYK** .zip file.
3. Extract the contents to a temporary folder.
4. Complete the installation process. If you have the Microsoft Visual Studio redistributable package or DLLs installed, use setup.msi. If you do not, use setup.exe.
5. Open the Microsoft IIS Manager.
6. Select the Microsoft IIS server that you want to configure.
7. Double-click **Configuration Editor**.
8. In the **Configuration Editor**, in the **Section** list, select **system.webServer/httpCompression**.
9. Click **(Collection)**.
10. Click the ... button that appears. The **Collection Editor** dialog box opens.

11. Click **Add**.
12. Enter the following information:
 - **Name:** bbyk
 - **DII:** The location that you installed the library into. By default, the location is %Windir%\system32\inetsrv\bbyk.dll.
13. Close the **Collection Editor** dialog box.
14. Click **Apply**.
15. Restart the computer that hosts Microsoft IIS.

Edit the BlackBerry Compression for Work Email IT policy rule

1. In the BlackBerry Administration Service, on the **BlackBerry Solution Management** menu, expand **Policy**.
2. Click **Manage IT Policies**.
3. Click the name of the IT policy that you want to change.
4. Click **Edit IT policy**.
5. Click the **Software** tab.
6. Set the **BlackBerry Compression for Work Email** rule to **Yes**.
7. Click **Save all**.

Installing and Configuring BlackBerry Email Compression for Enterprise in a BES12 environment

To install and configure BlackBerry Email Compression for Enterprise in a BES12 environment, you must perform the following tasks:

- Add the compression libraries to the Microsoft IIS instance that your mail server uses.
- Edit the “Use BlackBerry compression for work email” IT policy rule.

Add the compression libraries to Microsoft IIS

These instructions apply to Microsoft IIS 7.5. If you are using a different version of Microsoft IIS, some steps might be different. For more information, see the documentation for the Microsoft IIS version that you are using.


Warning: This task requires you to make changes to the web server configuration on the Microsoft Exchange Server. Any configuration errors might interrupt connectivity for Microsoft Outlook Web Access and Exchange ActiveSync. It is recommended that you verify connectivity after you complete this task.

Before you begin: Verify that Microsoft IIS has the Static Content Compression and the Dynamic Content Compression role services installed.

1. On the computer that hosts Microsoft IIS, verify that the Microsoft Visual C++ 2010 Redistributable -x64 Package (or equivalent DLLs) is installed.
2. Visit the [BlackBerry Compression for Work Email \(Server Plug-in\)](#) page and download the **Install_BBYK** zip file.
3. Extract the contents to a temporary folder.
4. Complete the installation process. If you have the Microsoft Visual Studio redistributable package/DLLs installed, use setup.msi . If you do not, use setup.exe .
5. Open the Microsoft IIS Manager.
6. Select the Microsoft IIS server that you want to configure.
7. Double-click **Configuration Editor**.
8. In the **Configuration Editor**, in the **Section** list, select **system.webServer/httpCompression**.
9. Click (**Collection**).
10. Click the ... button that appears. The **Collection Editor** dialog box opens.

11. Click **Add**.
12. Provide the following information:
 - **Name:** bbyk
 - **DII:** The location that you installed the library into. By default, the location is %Windir%\system32\inetsrv\bbyk.dll.
13. Close the **Collection Editor** dialog box.
14. Click **Apply**.
15. Restart the computer that hosts Microsoft IIS.

Edit the “Use BlackBerry compression for work email” IT policy rule

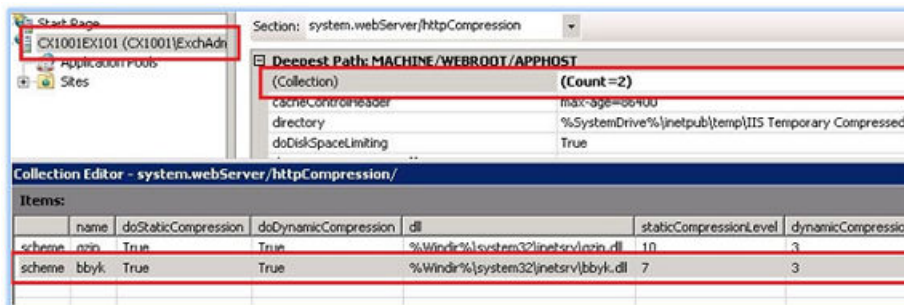
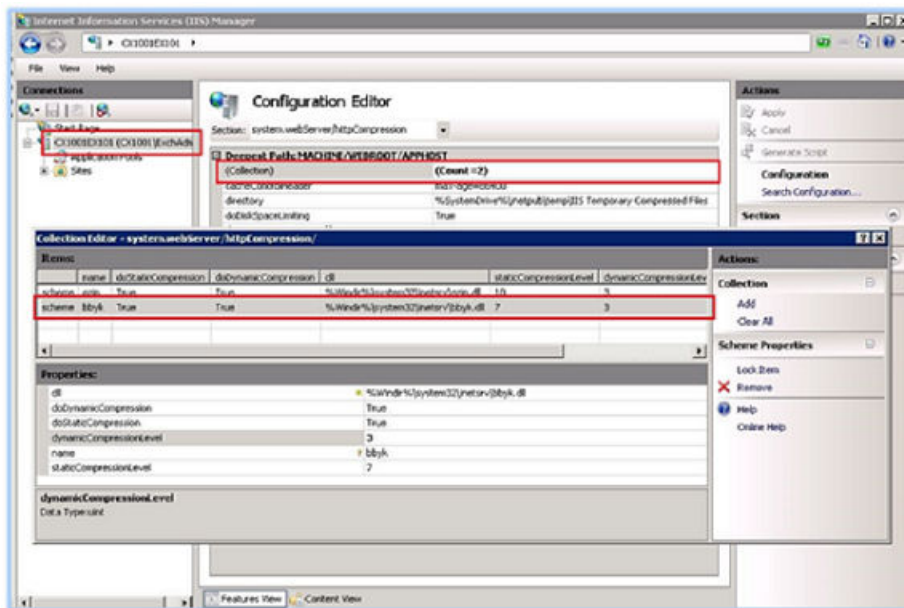
1. In the management console, on the menu bar, click **Policies and Profiles**.
2. In the left pane, expand **IT policies**.
3. Select the IT policy that you want to edit.
4. Click .
5. In the **BlackBerry** tab, in the **Device functionality** group, select the “**Use BlackBerry compression for work email**” IT policy rule.
6. Click **Save**.

Confirm that your server is using BlackBerry Email Compression for Enterprise

Complete the following task to confirm that the BlackBerry Email Compression for Enterprise library is being used.

1. Confirm that the bbyk.dll file exists in folder in which it was installed. By default, the setup application puts it in %Windir%\system32\inetrv\.
2. Using the Microsoft IIS Manager, confirm that the configuration is correct.

Example configuration



Logging and reporting

5

When BlackBerry Email Compression for Enterprise is enabled, server log files are stored in the log file path specified during installation. If no log file path was specified, server log files should be stored here: C:\Windows\Temp\
<computername_bbykvsgzip_YYYY-MM-DD.log>, depending on your operating system.

Example server statistics logging

```
Comparison compression done(Orig=430899; CmpBBYK=11255; CmpGzip=46546)
Comparison compression done(Orig=88; CmpBBYK=85; CmpGzip=221)
Comparison compression done(Orig=432452; CmpBBYK=11813; CmpGzip=47013)
```

Configure statistics logging

Note:

Log file sizes may become large because each email is calculated. For best performance, statistics logging should be disabled.

1. Navigate to the BlackBerry Email Compression for Enterprise configuration file. For example: C:\Program Files (x86)\Blackberry\BlackBerry Enhanced Compression\config\bbyk.config
2. Open the configuration file.
3. Change the `bbykvsgzip` value from "0" to "1".
4. To specify a data compression level, enter a `gzipLevel` value from "0" to "9". This level is passed to the `gzip.dll`.
5. If necessary, to specify where log files are stored, enter a `logPath` value. Make sure the Microsoft IIS server user, `IIS_IUSRS`, has access to the location where log files are stored.
6. Save and close the configuration file. By default, a log file is created in the following location: C:\Windows\Temp\
<computername_bbykvsgzip_YYYY-MM-DD.log>

Example of a bbyk.config file

```
bbykvsgzip=0
commaDelimited=0
gzipLevel=3
logPath=C:\Windows\Temp\
```

Legal notice

© 2015 BlackBerry. Trademarks, including but not limited to BLACKBERRY, EMBLEM Design, BBM, BES, MANYME, VIRTUAL SIM PLATFORM, WORKLIFE, MOVIRTU, SECUSMART, SECUSMART & Design, SECUSUITE, WATCHDOX, WATCHDOX & Design and WATCHDOX & EMBLEM Design are the trademarks or registered trademarks of BlackBerry Limited, its subsidiaries and/or affiliates, used under license, the exclusive rights to which are expressly reserved.

Microsoft and Windows are either registered trademarks or trademarks of Microsoft Corporation in the United States and/or other countries. This documentation including all documentation incorporated by reference herein such as documentation provided or made available on the BlackBerry website provided or made accessible "AS IS" and "AS AVAILABLE" and without condition, endorsement, guarantee, representation, or warranty of any kind by BlackBerry Limited and its affiliated companies ("BlackBerry") and BlackBerry assumes no responsibility for any typographical, technical, or other inaccuracies, errors, or omissions in this documentation. In order to protect BlackBerry proprietary and confidential information and/or trade secrets, this documentation may describe some aspects of BlackBerry technology in generalized terms. BlackBerry reserves the right to periodically change information that is contained in this documentation; however, BlackBerry makes no commitment to provide any such changes, updates, enhancements, or other additions to this documentation to you in a timely manner or at all.

This documentation might contain references to third-party sources of information, hardware or software, products or services including components and content such as content protected by copyright and/or third-party websites (collectively the "Third Party Products and Services"). BlackBerry does not control, and is not responsible for, any Third Party Products and Services including, without limitation the content, accuracy, copyright compliance, compatibility, performance, trustworthiness, legality, decency, links, or any other aspect of Third Party Products and Services. The inclusion of a reference to Third Party Products and Services in this documentation does not imply endorsement by BlackBerry of the Third Party Products and Services or the third party in any way.

EXCEPT TO THE EXTENT SPECIFICALLY PROHIBITED BY APPLICABLE LAW IN YOUR JURISDICTION, ALL CONDITIONS, ENDORSEMENTS, GUARANTEES, REPRESENTATIONS, OR WARRANTIES OF ANY KIND, EXPRESS OR IMPLIED, INCLUDING WITHOUT LIMITATION, ANY CONDITIONS, ENDORSEMENTS, GUARANTEES, REPRESENTATIONS OR WARRANTIES OF DURABILITY, FITNESS FOR A PARTICULAR PURPOSE OR USE, MERCHANTABILITY, MERCHANTABLE QUALITY, NON-INFRINGEMENT, SATISFACTORY QUALITY, OR TITLE, OR ARISING FROM A STATUTE OR CUSTOM OR A COURSE OF DEALING OR USAGE OF TRADE, OR RELATED TO THE DOCUMENTATION OR ITS USE, OR PERFORMANCE OR NON-PERFORMANCE OF ANY SOFTWARE, HARDWARE, SERVICE, OR ANY THIRD PARTY PRODUCTS AND SERVICES REFERENCED HEREIN, ARE HEREBY EXCLUDED. YOU MAY ALSO HAVE OTHER RIGHTS THAT VARY BY STATE OR PROVINCE. SOME JURISDICTIONS MAY NOT ALLOW THE EXCLUSION OR LIMITATION OF IMPLIED WARRANTIES AND CONDITIONS. TO THE EXTENT PERMITTED BY LAW, ANY IMPLIED WARRANTIES OR CONDITIONS RELATING TO THE DOCUMENTATION TO THE EXTENT THEY CANNOT BE EXCLUDED AS SET OUT ABOVE, BUT CAN BE LIMITED, ARE HEREBY LIMITED TO NINETY (90) DAYS FROM THE DATE YOU FIRST ACQUIRED THE DOCUMENTATION OR THE ITEM THAT IS THE SUBJECT OF THE CLAIM.

TO THE MAXIMUM EXTENT PERMITTED BY APPLICABLE LAW IN YOUR JURISDICTION, IN NO EVENT SHALL BLACKBERRY BE LIABLE FOR ANY TYPE OF DAMAGES RELATED TO THIS DOCUMENTATION OR ITS USE, OR PERFORMANCE OR NON-PERFORMANCE OF ANY SOFTWARE, HARDWARE, SERVICE, OR ANY THIRD PARTY PRODUCTS AND SERVICES REFERENCED HEREIN INCLUDING WITHOUT LIMITATION ANY OF THE FOLLOWING DAMAGES: DIRECT, CONSEQUENTIAL, EXEMPLARY, INCIDENTAL, INDIRECT, SPECIAL, PUNITIVE, OR AGGRAVATED DAMAGES, DAMAGES FOR LOSS OF PROFITS

OR REVENUES, FAILURE TO REALIZE ANY EXPECTED SAVINGS, BUSINESS INTERRUPTION, LOSS OF BUSINESS INFORMATION, LOSS OF BUSINESS OPPORTUNITY, OR CORRUPTION OR LOSS OF DATA, FAILURES TO TRANSMIT OR RECEIVE ANY DATA, PROBLEMS ASSOCIATED WITH ANY APPLICATIONS USED IN CONJUNCTION WITH BLACKBERRY PRODUCTS OR SERVICES, DOWNTIME COSTS, LOSS OF THE USE OF BLACKBERRY PRODUCTS OR SERVICES OR ANY PORTION THEREOF OR OF ANY AIRTIME SERVICES, COST OF SUBSTITUTE GOODS, COSTS OF COVER, FACILITIES OR SERVICES, COST OF CAPITAL, OR OTHER SIMILAR PECUNIARY LOSSES, WHETHER OR NOT SUCH DAMAGES WERE FORESEEN OR UNFORESEEN, AND EVEN IF BLACKBERRY HAS BEEN ADVISED OF THE POSSIBILITY OF SUCH DAMAGES.

TO THE MAXIMUM EXTENT PERMITTED BY APPLICABLE LAW IN YOUR JURISDICTION, BLACKBERRY SHALL HAVE NO OTHER OBLIGATION, DUTY, OR LIABILITY WHATSOEVER IN CONTRACT, TORT, OR OTHERWISE TO YOU INCLUDING ANY LIABILITY FOR NEGLIGENCE OR STRICT LIABILITY.

THE LIMITATIONS, EXCLUSIONS, AND DISCLAIMERS HEREIN SHALL APPLY: (A) IRRESPECTIVE OF THE NATURE OF THE CAUSE OF ACTION, DEMAND, OR ACTION BY YOU INCLUDING BUT NOT LIMITED TO BREACH OF CONTRACT, NEGLIGENCE, TORT, STRICT LIABILITY OR ANY OTHER LEGAL THEORY AND SHALL SURVIVE A FUNDAMENTAL BREACH OR BREACHES OR THE FAILURE OF THE ESSENTIAL PURPOSE OF THIS AGREEMENT OR OF ANY REMEDY CONTAINED HEREIN; AND (B) TO BLACKBERRY AND ITS AFFILIATED COMPANIES, THEIR SUCCESSORS, ASSIGNS, AGENTS, SUPPLIERS (INCLUDING AIRTIME SERVICE PROVIDERS), AUTHORIZED BLACKBERRY DISTRIBUTORS (ALSO INCLUDING AIRTIME SERVICE PROVIDERS) AND THEIR RESPECTIVE DIRECTORS, EMPLOYEES, AND INDEPENDENT CONTRACTORS.

IN ADDITION TO THE LIMITATIONS AND EXCLUSIONS SET OUT ABOVE, IN NO EVENT SHALL ANY DIRECTOR, EMPLOYEE, AGENT, DISTRIBUTOR, SUPPLIER, INDEPENDENT CONTRACTOR OF BLACKBERRY OR ANY AFFILIATES OF BLACKBERRY HAVE ANY LIABILITY ARISING FROM OR RELATED TO THE DOCUMENTATION.

Prior to subscribing for, installing, or using any Third Party Products and Services, it is your responsibility to ensure that your airtime service provider has agreed to support all of their features. Some airtime service providers might not offer Internet browsing functionality with a subscription to the BlackBerry® Internet Service. Check with your service provider for availability, roaming arrangements, service plans and features. Installation or use of Third Party Products and Services with BlackBerry's products and services may require one or more patent, trademark, copyright, or other licenses in order to avoid infringement or violation of third party rights. You are solely responsible for determining whether to use Third Party Products and Services and if any third party licenses are required to do so. If required you are responsible for acquiring them. You should not install or use Third Party Products and Services until all necessary licenses have been acquired. Any Third Party Products and Services that are provided with BlackBerry's products and services are provided as a convenience to you and are provided "AS IS" with no express or implied conditions, endorsements, guarantees, representations, or warranties of any kind by BlackBerry and BlackBerry assumes no liability whatsoever, in relation thereto. Your use of Third Party Products and Services shall be governed by and subject to you agreeing to the terms of separate licenses and other agreements applicable thereto with third parties, except to the extent expressly covered by a license or other agreement with BlackBerry.

The terms of use of any BlackBerry product or service are set out in a separate license or other agreement with BlackBerry applicable thereto. NOTHING IN THIS DOCUMENTATION IS INTENDED TO SUPERSEDE ANY EXPRESS WRITTEN AGREEMENTS OR WARRANTIES PROVIDED BY BLACKBERRY FOR PORTIONS OF ANY BLACKBERRY PRODUCT OR SERVICE OTHER THAN THIS DOCUMENTATION.

BlackBerry Limited
2200 University Avenue East
Waterloo, Ontario
Canada N2K 0A7

BlackBerry UK Limited
200 Bath Road
Slough, Berkshire SL1 3XE
United Kingdom

Published in Canada